

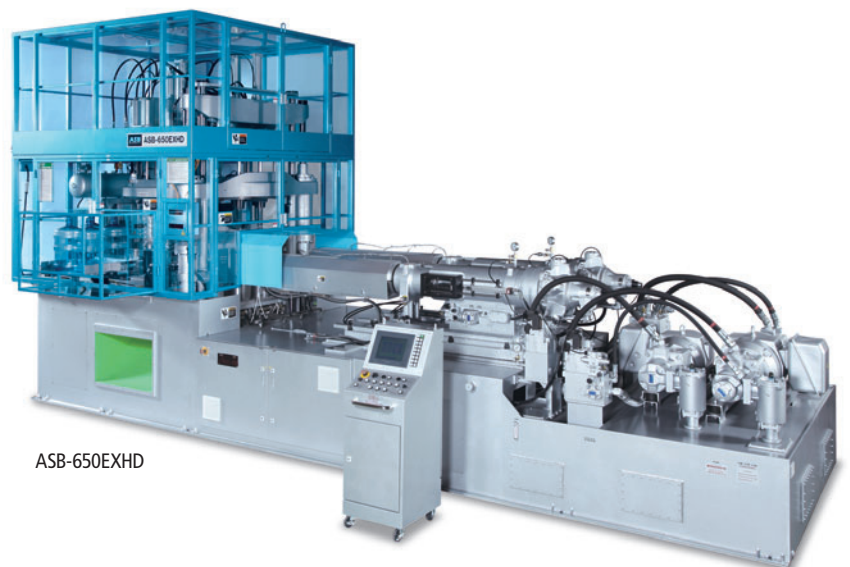
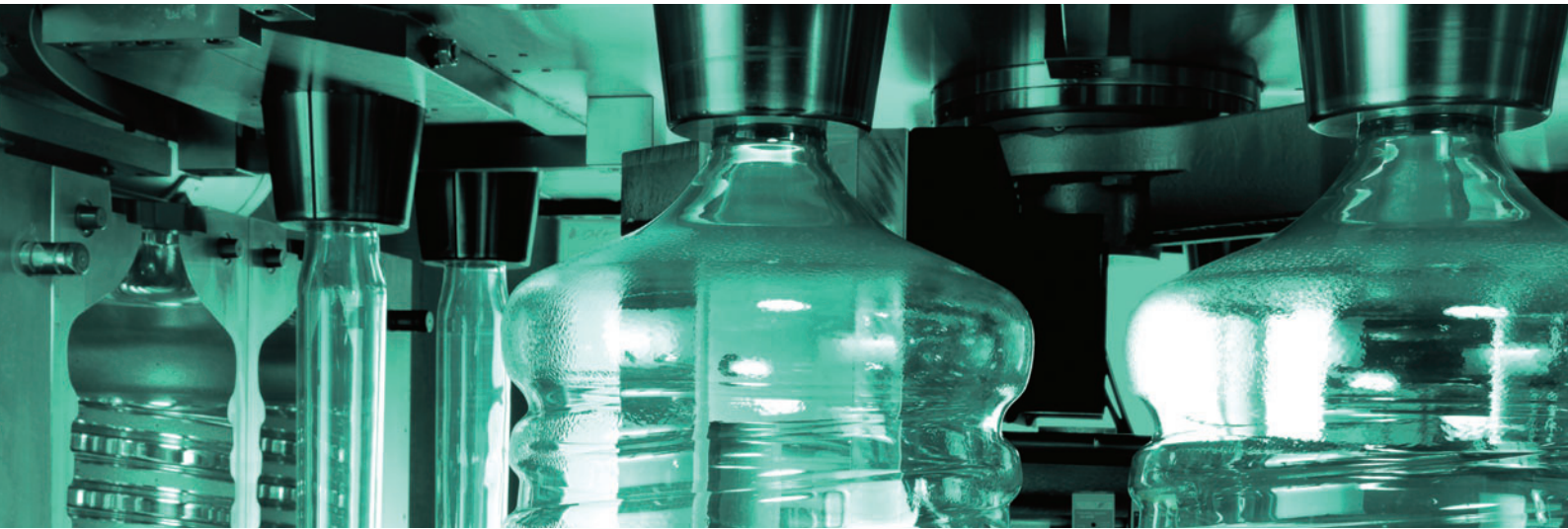
One-Step Injection Stretch Blow Molding Machine

ASB Series

# ASB-650EXHS ASB-650EXHD

For Very Large Containers with Single Injection Unit

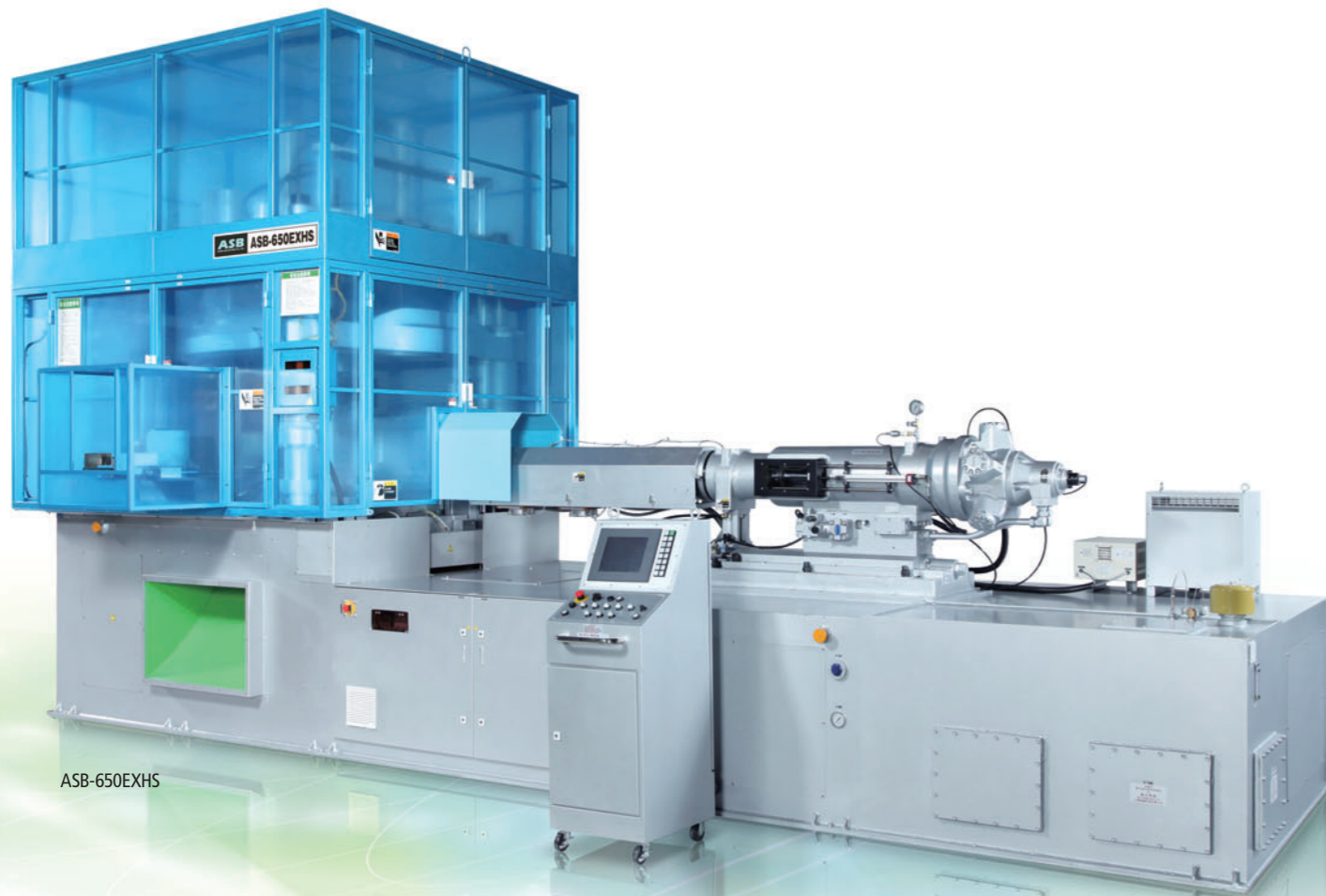
For Very Large Containers with Twin Injection Unit



ASB-650EXHD

# ASB-650EXHS ASB-650EXHD

One-Step Injection Stretch Blow Molding Machine



ASB-650EXHS

## Perfect for Molding 5 Gallon (20L) Returnable Containers

The rigid, stable injection clamp mechanism enables the accurate production of very thick walled preforms required for the production of heavy, large returnable containers. Additionally, the injection unit capacity is optimized for the very large shot size. Conditioning and blow stations include special features, and heat setting during PET blow molding provides optimal heat resistance required for returnable containers. As a result, these machines are perfect for the production of 5 gallon returnable bottles in PET or PC, with or without handles. Where a higher heat resistance is required in large, returnable PET bottles, downstream processing equipment can be added.\*1

\*1: For further details, please contact your local sales representative.



▲ PC Bottle



▲ PET Bottle

## Beautiful Containers

In the one-step process, stunningly clear containers can be blow molded by using the residual heat from the injection molding process. Containers molded by either extrusion blow molding or the two-step re-heat process can never achieve the same levels of visual quality. Precision injection molding of the neck provides a perfect sealing surface and smooth bore preventing any possibility of leakage. In addition, the injection molding process ensures no problems with flash on the base or neck, resulting in beautifully clear and perfectly formed containers.

Machine Specification	Unit	ASB-650EXHS v2	ASB-650EXHD
Standard Screw Diameter (φ)	mm	75	
Theoretical Injection Capacity	cm <sup>3</sup>	1,060 * <sup>3</sup>	1,060 × 2 * <sup>3</sup>
Driving Power (Rated)	kW	55	130
Injection Clamping Force	kN	511/581 * <sup>4</sup>	
Blow Clamping Force	kN	343	494
Heater Capacity (Rated)	kW	48.6 * <sup>5</sup>	78.7 * <sup>5</sup>
Oil Reservoir Capacity	L	910	2,300
Machine Size (L×W×H)	mm	7,203 × 2,250 × 3,896	7,660 × 2,500 × 3,896
Machine Weight (Approx.)	ton	20	23.5

● Specifications are subject to change without any obligation on the part of the manufacturer.  
\*3: This is considering the standard screw. \*4: Upper / Lower \*5: Depends on container specification, number of cavity and mold.

## Reduced Power Consumption

By re-designing the machine hydraulic system, the power consumption of the ASB-650EXHS v2 has been reduced by 45%\*2 from the previous model.

\*2: This figure is for reference. Actual consumption depends on the mold and the molding cycle time.

## Easy Operation

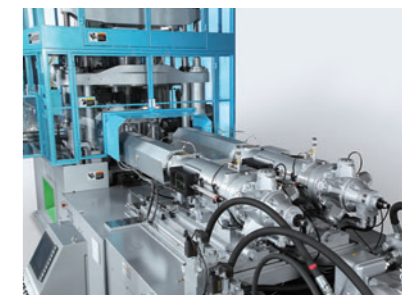
The color touch panel interface ensures easy operation and can be switched into a variety of languages.

## ASB-650EXHS

Single injection unit

## ASB-650EXHD

Twin injection unit with 2 cavity layout of 5 gallon returnable containers, the productivity is doubled.



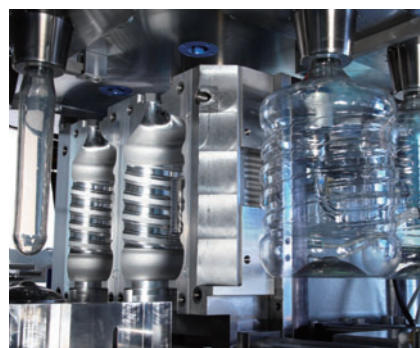
● ASB-650EXHD Twin injection unit

## Typical Containers

- Applications : Any large bottle or jar including 5 gallon returnable water bottle
- Materials : PET, PC, PP etc.
- Shapes : Standard round, with handle, wide-mouth, oval etc.

Products Specification	Unit	ASB-650EXHS v2				ASB-650EXHD		
Cavity Number	cavity	1	2	(3)	4	2	4	
Max. Capacit	L	20	20	(12)	5(7)	20	7	
Max. Thread Diameter	T	mm	140	120	(90)	84	120	84
Max. Neck Diameter	E	mm	135	115	(86)	80	115	80
Max. Support Ring Diameter	SR	mm	140	120	(90)	84	120	84
Max. Body Diameter	BD	mm	280	235(280)	(230)	180	280	180
Max. Height	HB	mm	510	510	(510)	510	510	510
Max. Weight* <sup>6</sup>	g	901	450	(300)	225	901	450	

● ( ) Optional figure.  
\*6: Using standard screw and PET.



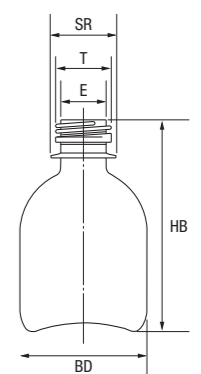
● Blow Mold and Gallon Containers

## Standard machine for molding very large containers. Beautiful containers molded by the one-step process.

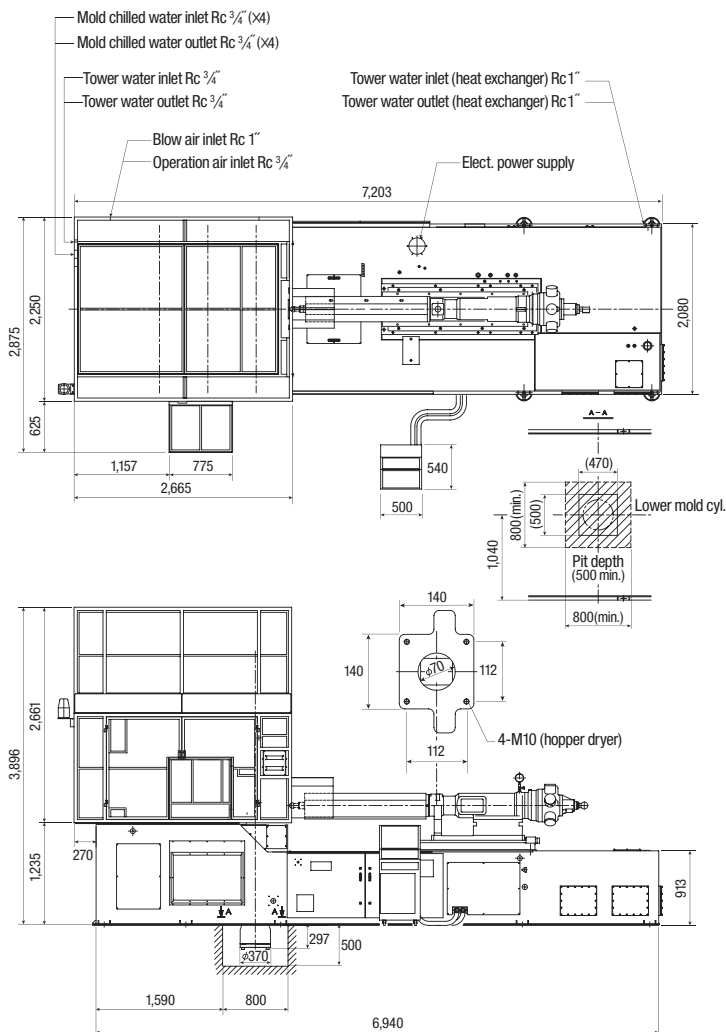
As with all ASB Series machines, these models are capable of molding a wide range of products in a variety of materials, but are ideally suited for the production of 20L PET or PC bottles.

These models can trace their design heritage back to our first ASB Series machines delivered over 30 years ago — when a design is this good, why change it?

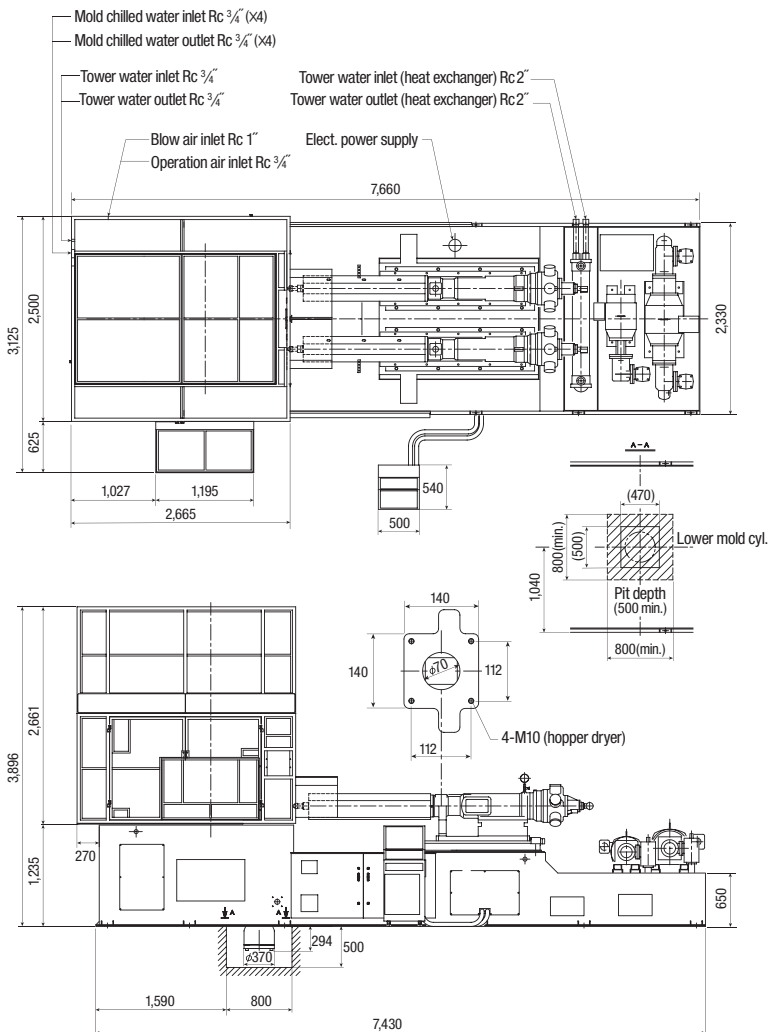
With the addition of updated hydraulic and electronic control systems these machines are both well-proven and state-of-the-art.



## ASB-650EXHS



## ASB-650EXHD



### NISSEI ASB MACHINE CO., LTD.

4586-3 Koo, Komoro-Shi, Nagano-Ken 384-8585, JAPAN  
 TEL: 81 (267) 23-1565  
 FAX: 81 (267) 23-1564  
 E-Mail: sales@nisseiasb.co.jp  
[www.nisseiasb.co.jp/en/](http://www.nisseiasb.co.jp/en/)



[www.youtube.com/user/NisseiASBMachine](https://www.youtube.com/user/NisseiASBMachine)

**Head Office and Factory**  
**NISSEI ASB MACHINE CO., LTD.**  
 4586-3 Koo, Komoro-shi, Nagano-ken 384-8585, JAPAN  
 TEL: 81 (267) 23-1565 FAX: 81 (267) 23-1564  
 E-Mail: sales@nisseiasb.co.jp

**U. S. A. and Canada**  
**NISSEI ASB COMPANY**  
 125 Westlake Parkway Suite 120, Atlanta, Georgia 30336 U.S.A.  
 TEL: 1 (404) 699-7755 FAX: 1 (404) 696-9009  
 E-Mail: sales@nisseiasbus.com

**Mexico, Central America**  
**NISSEI ASB CENTRO AMERICA, S.A. DE C.V.**  
 Torres Adalid 618 1er Piso, Col. Del Valle C.P. 03100, México, D.F., MEXICO  
 TEL: 52 (555) 669-00-69 FAX: 52 (555) 669-16-45  
 E-Mail: info@asbcentroamerica.com

**South America**  
**NISSEI ASB SUDAMERICA LTDA.**  
 Av. Queiroz Filho nº 1.700 – Edifício Sky Tower – Conjunto 108  
 Bairro Alto de Pinheiros – São Paulo – SP CEP: 05319-000, BRAZIL  
 TEL: 55 (11) 3641-5353 FAX: 55 (11) 3831-9948  
 E-Mail: sales@nisseiasb.com.br

**UK and Ireland**  
**NISSEI ASB LIMITED**  
 2 Milnyard Square, Bakewell Road, Orton Southgate,  
 Peterborough PE2 6GX, UK.  
 TEL: 44 (1733) 233544 FAX: 44 (1733) 235647  
 E-Mail: sales@nisseiasb.co.uk

**Europe, CIS, Turkey and Egypt**  
**NISSEI ASB GmbH**  
 Mündelheimer Weg 58, 40472 Düsseldorf, GERMANY  
 TEL: 49 (211) 94104-0 FAX: 49 (211) 94104-39  
 E-Mail: nissei@nisseiasb.de

**Iberia, Italy and Maghreb**  
**NISSEI ASB MEDITERRANEA, S.L.U.**  
 Poligono Industrial Vallegón Pabellón 38: 39709  
 Samano (Cantabria), SPAIN  
 TEL: 34 (942) 87-1016 FAX: 34 (942) 86-7922  
 E-Mail: nisseiasb@nisseiasbmediterranea.com

**Middle East and Central Africa**  
**NISSEI ASB FZE**  
 Jebel Ali Free Zone (South) Warehouse No. FZS1B-016  
 P.O. Box: 16789, Dubai, U.A.E.  
 TEL: 971 (4) 8860919 FAX: 971 (4) 8860918  
 E-Mail: asbuae@emirates.net.ae

**NISSEI ASB AFRICA LIMITED**  
 Novel House, Plot 3, Block J, Otunba Jobi Fele Way,  
 Alausa CBD, Ikeja, Lagos, NIGERIA  
 TEL: 234 (1) 8448167  
 E-Mail: ASB\_Africa@asbfze.ae

**South & West Asia, Oceania, and Southern Africa**  
**NISSEI ASB PTE. LTD.**  
 85 Science Park Drive #01-03 The Cavendish  
 Singapore Science Park I SINGAPORE 118259  
 TEL: 65-6778-4633 FAX: 65-6778-9440  
 E-Mail: sales@nisseiasb.com.sg

**ASB PTE (THAILAND) CO., LTD.**  
 124 Soi 1 Sukhumvit 62 Sukhumvit Road Bangchak Prakanong  
 Bangkok 10260 THAILAND  
 TEL: 66 (2) 311-7556/7557/7558 FAX: 66 (2) 741-7295  
 E-Mail: asbpte@trueamail.com.th

**NISSEI ASB SOUTH AFRICA (Pty) LTD.**  
 977 Sovereign Drive, Route 21 Corporate Park, Nelmapius Drive,  
 Irene Ext.30, 0062, 0157, SOUTH AFRICA  
 TEL: 27 (12) 345-4924 FAX: 27 (12) 345-5667  
 E-Mail: sales@nisseiasb.co.za

**PT. ASB INDONESIA**  
 Jl. Pangeran Jayakarta, No. 26, Block A-18, Jakarta Pusat 10730,  
 INDONESIA  
 TEL: 62 (21) 629-7978/5018 FAX: 62 (21) 629-5010  
 E-Mail: asbindonesia@cbn.net.id

**PHILIPPINES Office**  
 Unit 1703 Annapolis Wilshire Plaza No.11 Annapolis Street,  
 Greenhills San Juan, Metro Manila, PHILIPPINES 1500  
 TEL: 63 (2) 725-4220 FAX: 63 (2) 725-4203  
 E-Mail: nisseiasb@smartbroadband.net.ph

**VIETNAM Office**  
 Suite 601 6th Floor, Zen Plaza 54-56 Nguyen Trai Street,  
 Dist. 1, Ho Chi Minh City, VIETNAM  
 TEL: 84 (8) 3925-1008 FAX: 84 (8) 3925-1009  
 E-Mail: nisseiasbhcm@vnn.vn

**INDIA BRANCH Office**  
 309-311, Ansal Chambers-II 6, Bhikaji Cama Place,  
 New Delhi 110 066, INDIA  
 TEL: 91 (11) 2618-1615/2619-4031 FAX: 91 (11) 2619-4129  
 E-Mail: asbdel@asbi.co.in

**PAKISTAN Office**  
 401, Progressive Square 11-A, Block-6, P.E.C.H.S. Karachi 75400,  
 PAKISTAN  
 TEL: 92 (21) 3454-6533 FAX: 92 (21) 3453-7469  
 E-Mail: asbpakistan@gmail.com

**AUSTRALIA Office**  
 PO Box 1252, Camberwell, Victoria, 3124 AUSTRALIA  
 TEL: 61 (418) 312-386  
 E-Mail: asbaust@alphalink.com.au

**SHANGHAI ASB TRADE CO., LTD.**  
 Room 1109, 339-1 Jiuxin Rd., Jiuting, Songjiang District,  
 Shanghai 201615, CHINA  
 TEL: 86 (21) 5763-0233 FAX: 86 (21) 5763-0699  
 E-Mail: sales@shasb.com

**ASB INTERNATIONAL PVT. LTD.**  
 E-9, MIDC, Industrial Area, Anand Nagar, Addl. Ambarnath,  
 District-Thane-421506, Maharashtra, INDIA  
 TEL: 91 (251) 262-5000/648-5070 FAX: 91 (251) 262-5035/5055  
 E-Mail: sales@asbi.co.in